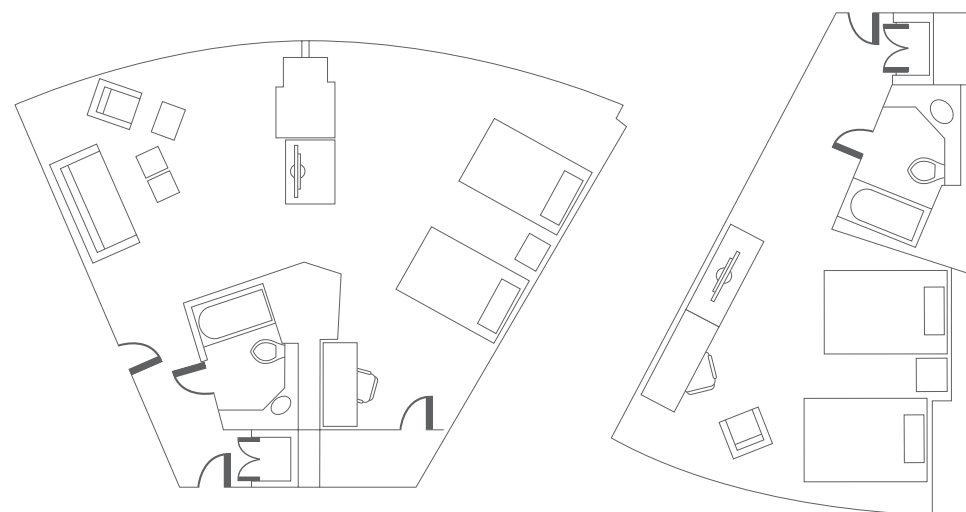


THE WESTIN BONAVENTURE HOTEL & SUITES LOS ANGELES



MASTER DOUBLE

DOUBLE DOUBLE

DOUBLE DOUBLE
(pictured as one bedroom)

Number of Rooms
564

Reception Capacity
N/A

Size
Master Double
Approx. 960 square feet
Double Double
Approx. 320-340 square feet

Bedrooms
One bedroom with two
Double beds

Location
(DD) Floors 10-20 (Yellow, Red,
Blue, Center); (DD) Floors 21-23 and
27 (Center) 3; (DD w/Suite) Floor 31
(Yellow Red)

QUEEN ADA
(pictured as one bedroom)

Number of Rooms
29

Reception Capacity
N/A

Size
320-340 square feet
Bedrooms
One bedroom with two
Queen beds

Location
Floors 16-29 (Red, Center);
Floors 30 and 31 (Red)

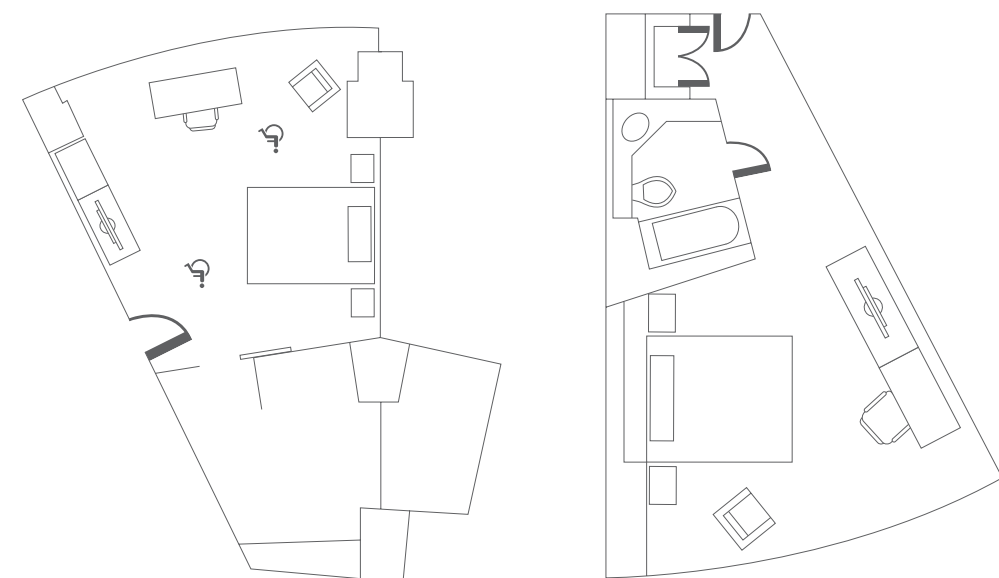
KING
(pictured as one bedroom)

Number of Rooms
661; 7 Master Kings also available

Reception Capacity
N/A

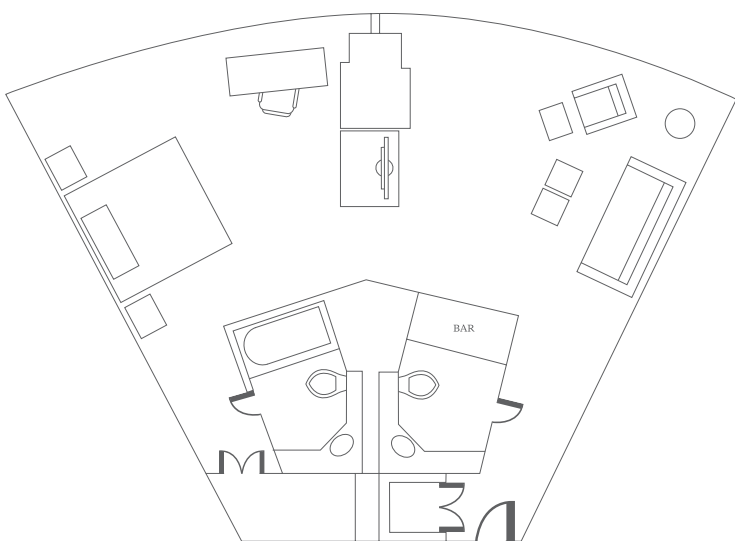
Size
Approx. 310-360 square feet
Bedrooms
One bedroom with one King bed

Location
Floors 10-11, 14-20 (Green Tower);
Floors 12, 24-29 (Center, Red,
Yellow, Green, Blue), Floors 21-23,
30 (Yellow, Green, Red, Blue), 31
(Yellow and Red)

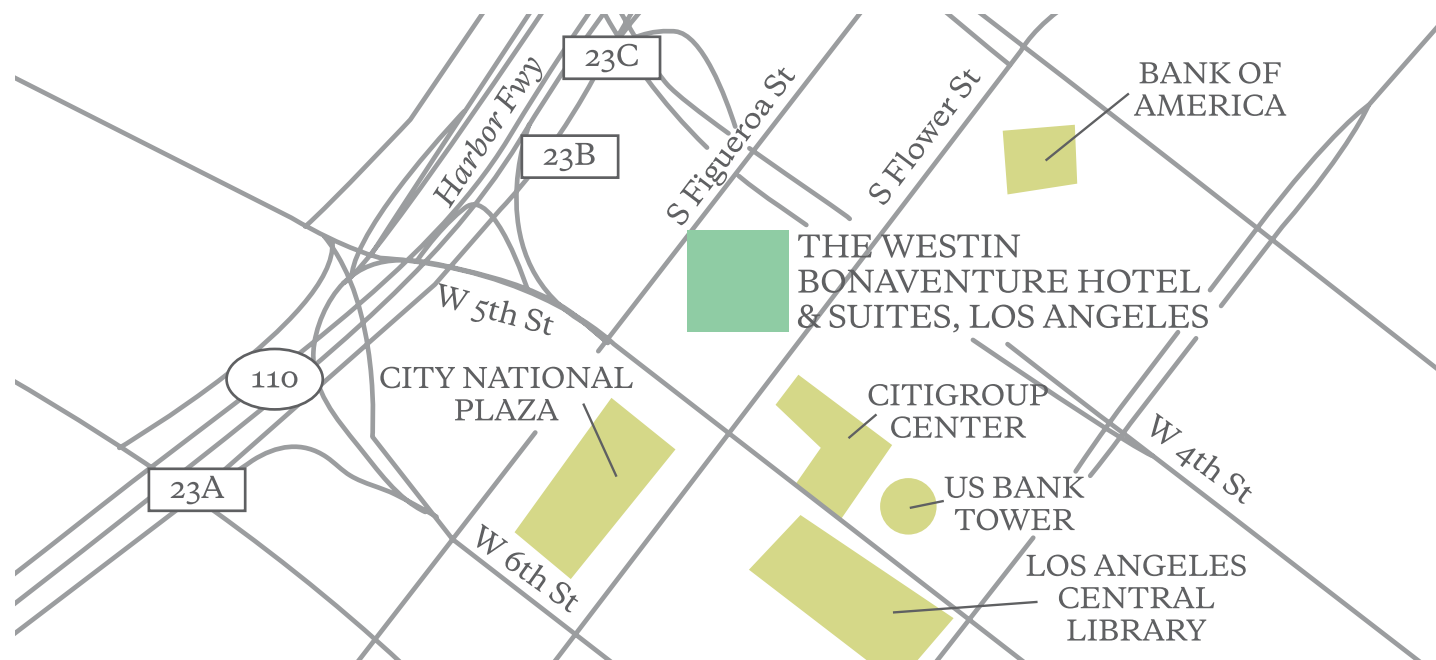


QUEEN ADA

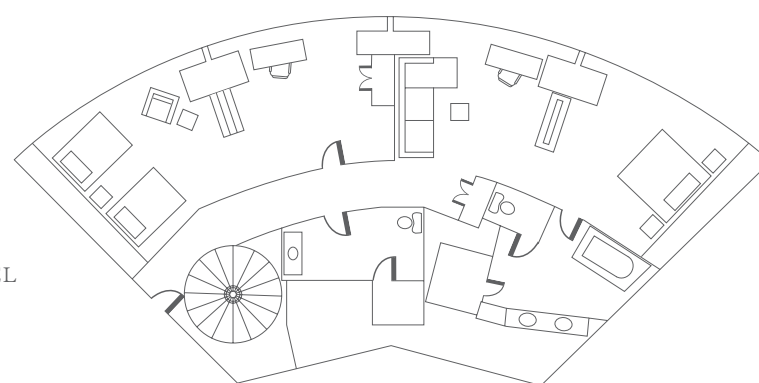
KING



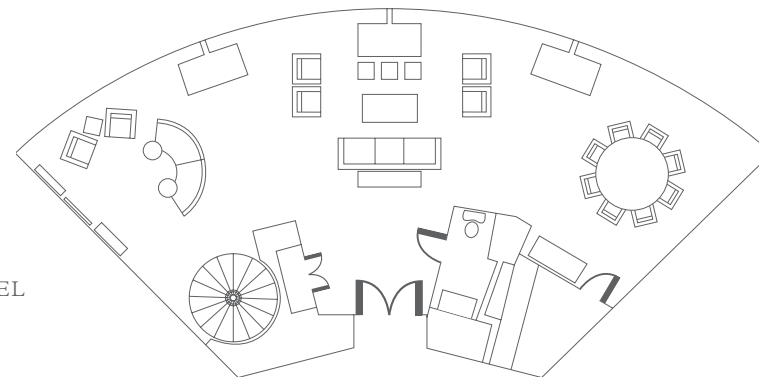
MASTER KING



THE WESTIN BONAVENTURE
HOTEL & SUITES
404 South Figueroa St, Los Angeles, CA 90071 USA
T 213 624 1000 F 213 612 4800
westin.com/bonaventure



UPPER LEVEL



LOWER LEVEL

BUNKER HILL SUITE
(bi-level parlor and two master
bedrooms)

Number of Suites
Two Bunker Hill Suites

Reception Capacity
Accommodates up to 64 people on
two levels connected by a staircase

Size
Upstairs and downstairs parlors
480 square feet each; master
bedrooms 480 square feet each;
3-1/2 baths

Bedrooms
Two master bedrooms; one with
California King bed and one with
two Queen beds, complete with
dressing and sitting areas

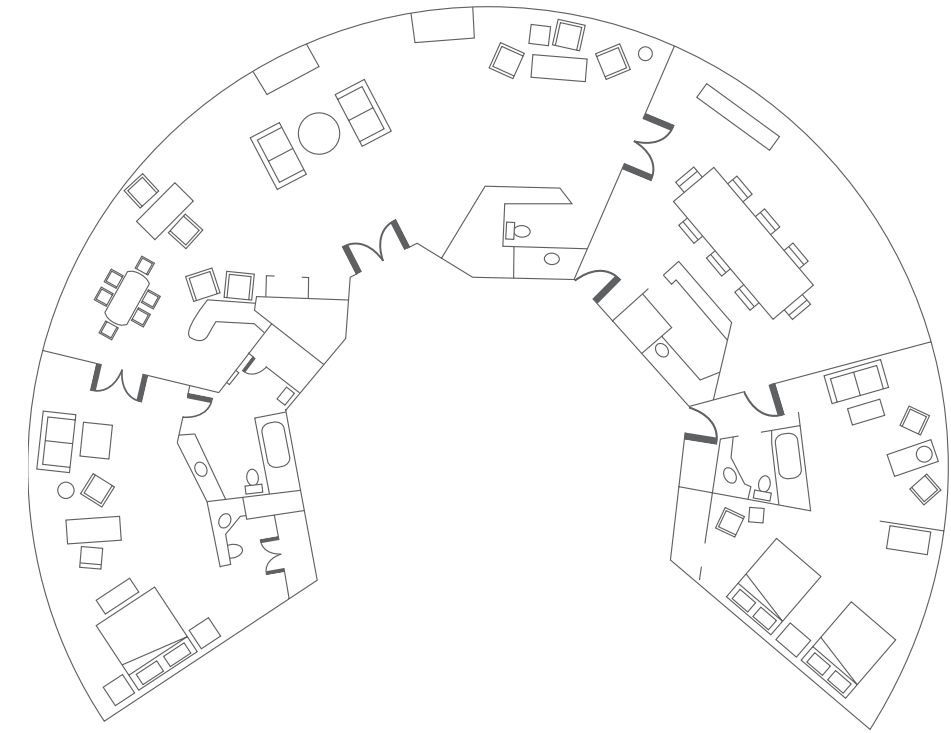
Location
Floor 32; Center Tower



ENDLESS POSSIBILITIES

Suite Amenities

Each of our 135 indulgent suites offers an array of refreshing amenities, including the Heavenly Bed® and Heavenly Bath®, wireless high-speed Internet access, wall safe, premium television channels, vaulted ceilings, built-in stereo system, wet bar, and invigorating views of the city. Other thoughtful touches include a full-size bath in each parlor, and a dining table and refreshment center in hospitality suite parlors.



HUNTINGTON SUITE

(pictured as two bedrooms)

Number of Suites

Two Huntington Suites

Reception Capacity

Accommodates up to 72 people in dining room and parlor

Size

Parlor 720 square feet; dining/conference 360 square feet; bedrooms 360 square feet each

Bedrooms

Up to four master bedrooms; three with a California King bed and one with two Queen beds; all bedrooms feature a dressing and sitting area

Location

Floor 31; Outer Towers

PACIFIC SUITE

(pictured as two bedrooms)

Number of Suites

Four Pacific Suites

Reception Capacity

Accommodates up to 24 people in the parlor

Size

Parlor 360 square feet; library 180 square feet; master bedroom 360 square feet; additional bedrooms 180 square feet each

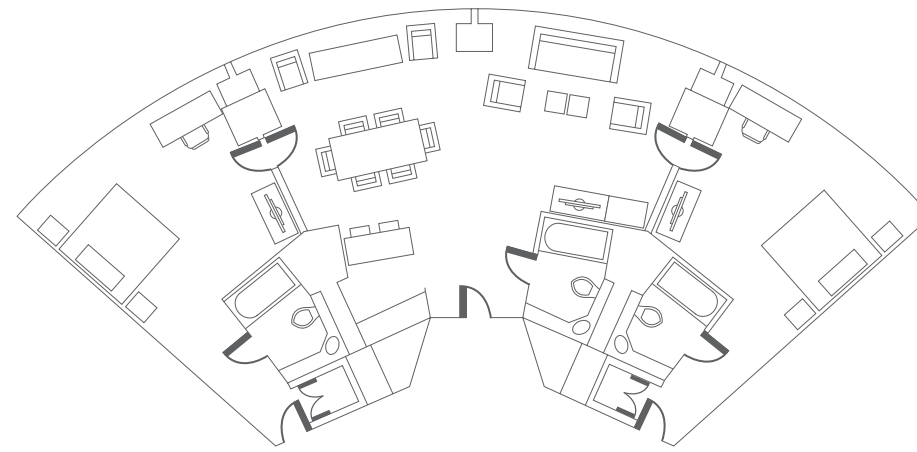
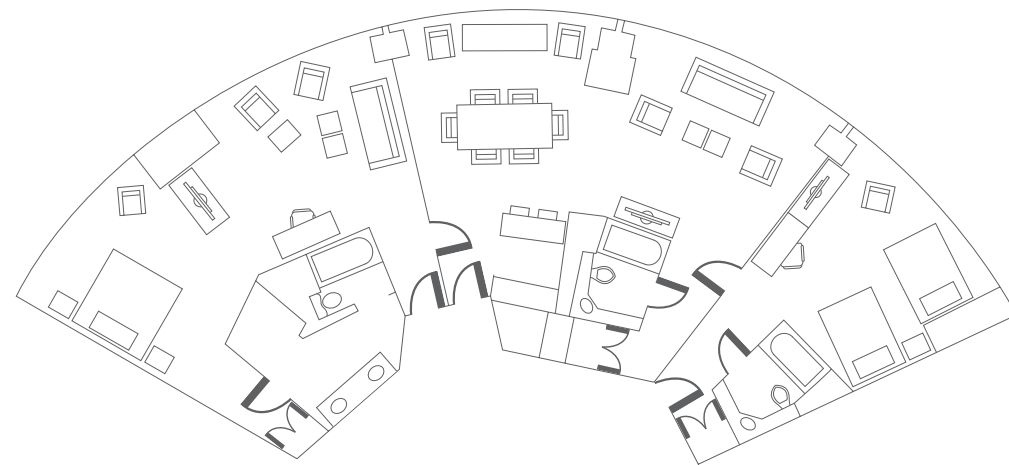
Bedrooms

Up to three; master bedroom with California King bed; with dressing and sitting areas. Connecting rooms with Queen bed

ADA suites available

Location

Floor 31; Outer Towers



LAGUNA SUITE

(pictured as two bedrooms)

Number of Suites

Eight Laguna Suites

Reception Capacity

Accommodates up to 24 people

Size

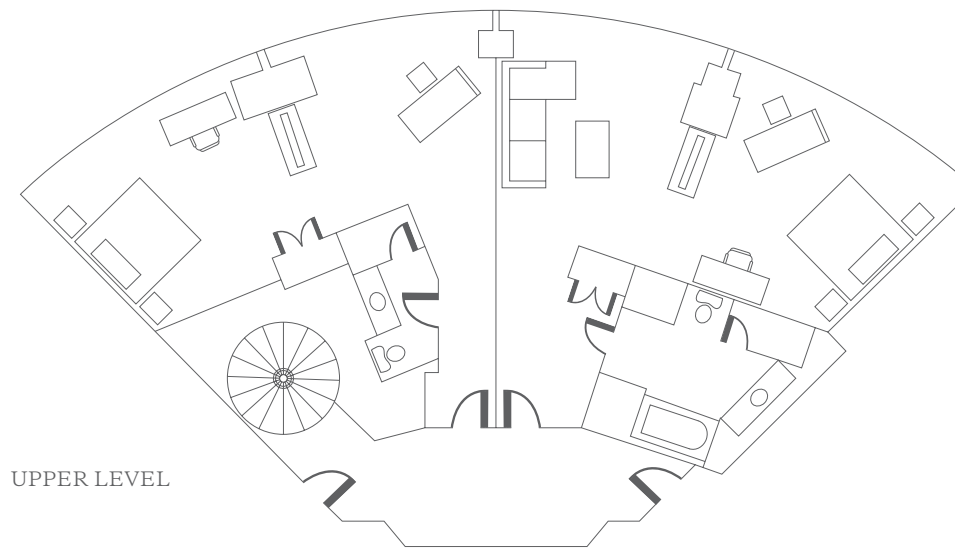
Parlor 360 square feet; bedroom 180 square feet

Bedrooms

Up to three with California King bed

Location

Floor 30; Outer Towers



UPPER LEVEL

PALISADES SUITE

(bi-level parlor and two master bedrooms)

Number of Suites

One Palisade Suite

Reception Capacity

Accommodates up to 64 people

Size

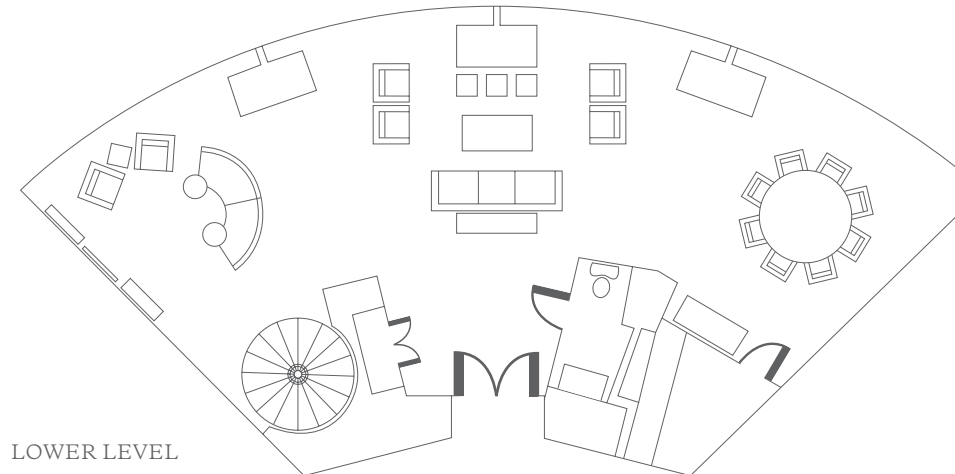
Parlors 960 square feet each; master bedrooms 480 square feet each

Bedrooms

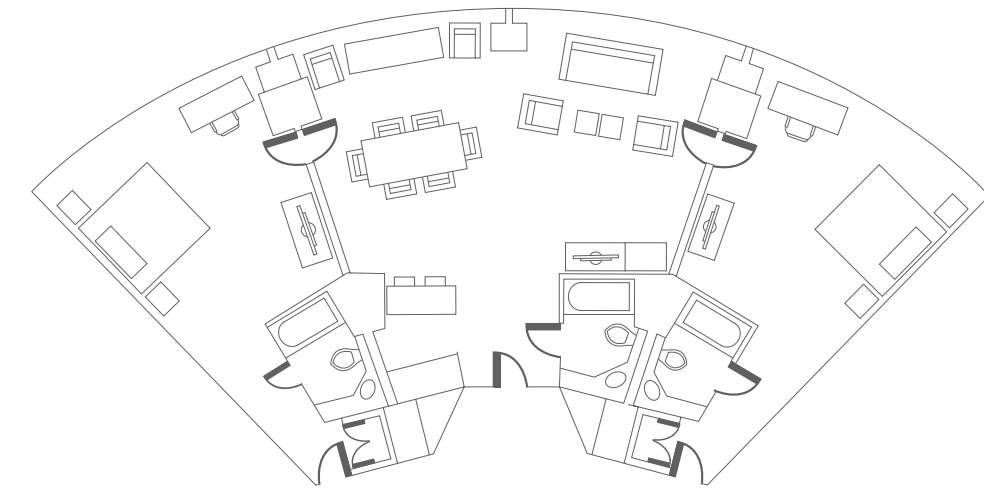
Two master bedrooms upstairs; two California King beds; dressing and sitting areas

Location

Floor 32; Center Tower



LOWER LEVEL



MALIBU SUITE

(pictured as two bedrooms)

Number of Suites

Eight Malibu Suites

Reception Capacity

Accommodates up to 32 people

Size

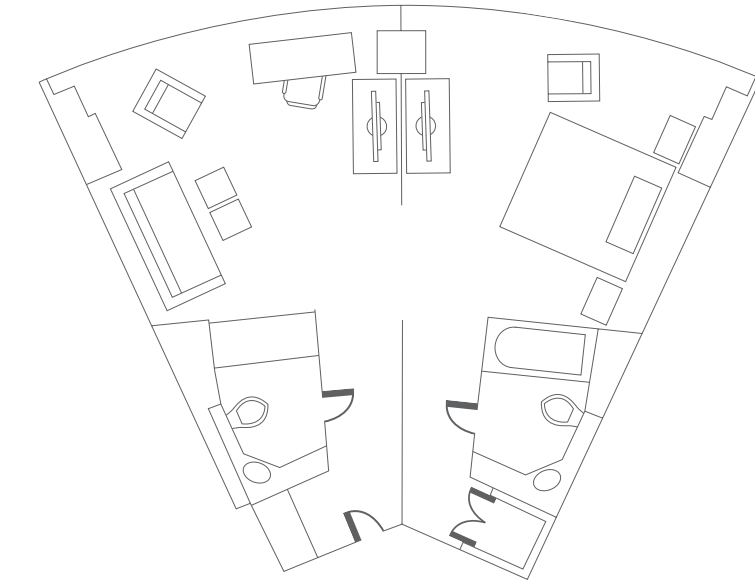
Parlor 480 square feet; bedroom; 240 square feet

Bedrooms

One or two bedrooms with Master King bed

Location

Floors 30 and 31; Center Tower



TOWER SUITE

(pictured as one bedroom)

Number of Suites

94 Tower Suites

Tower Suite Workout rooms and Tower Suite ADA suites available

Reception Capacity

Accommodates up to 12 people

Size

Parlor 180 square feet; bedroom 180 square feet; 1-1/2 baths

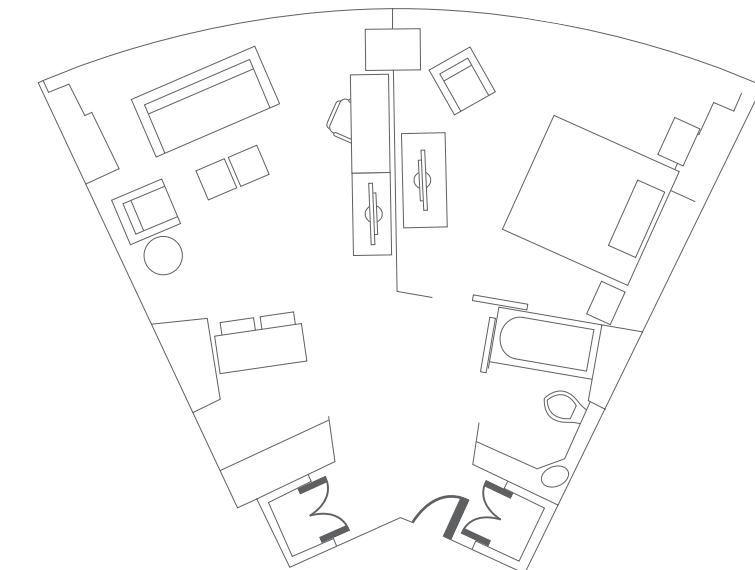
Bedrooms

One bedroom only with California King bed

Workout and ADA suites available

Location

Green Tower



REDONDO SUITE

(pictured as one bedroom)

Number of Suites

16 Redondo Suites

Reception Capacity

Accommodates up to 24 people

Size

360 square feet; bedroom 180 square feet

Bedrooms

One or two bedrooms with King bed

Location

Floors 26-29; Outer Towers